



MindSpace

YEYYADI,
AIRPORT ROAD, MANGALORE



DISCOVER THE PHENOMENON



When diverse ideas, philosophies & visions converge, the end result is extraordinary.

MindSpace is a collaborative effort from Citadel Developers and Paradise Properties. It offers Commercial spaces with unique features.

The building is specially designed for modular office and commercial units that offer great flexibility.

The convenient location, innovative design with abundant parking space and aesthetic appearance, brings you one step closer to realising your business goals.



EXPERIENCE THE UNIQUENESS

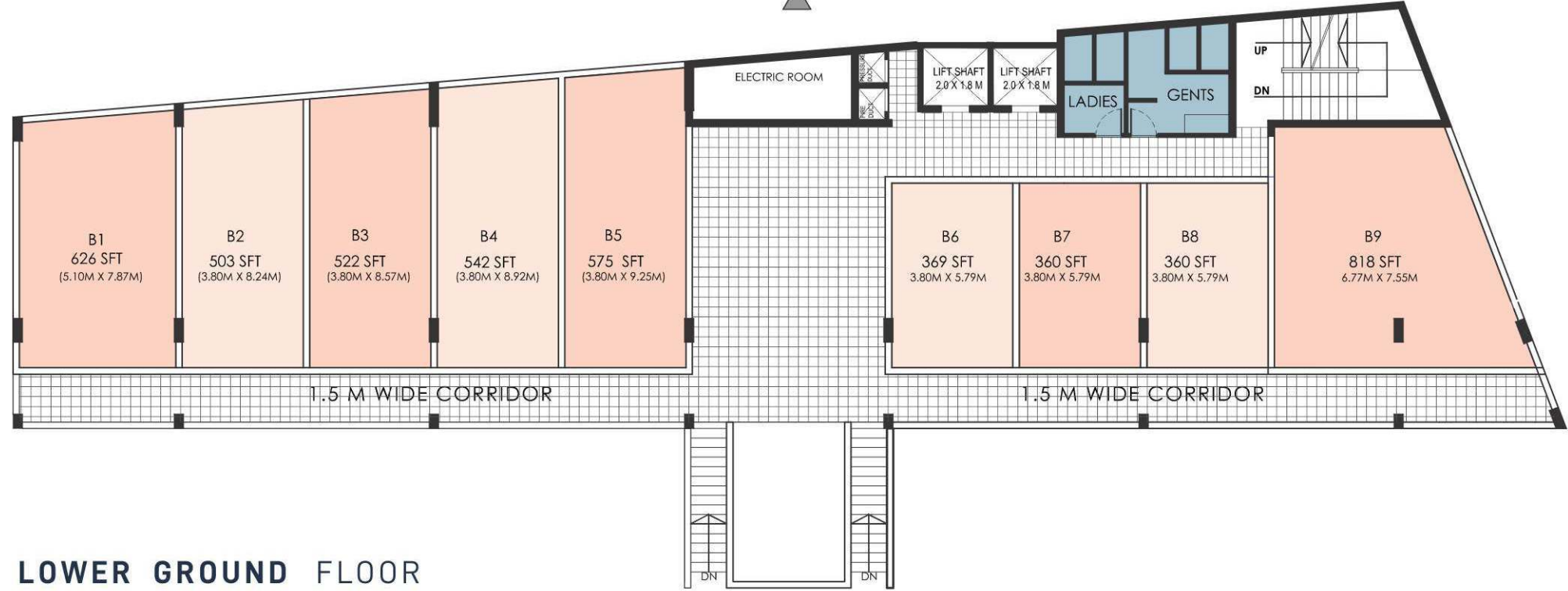
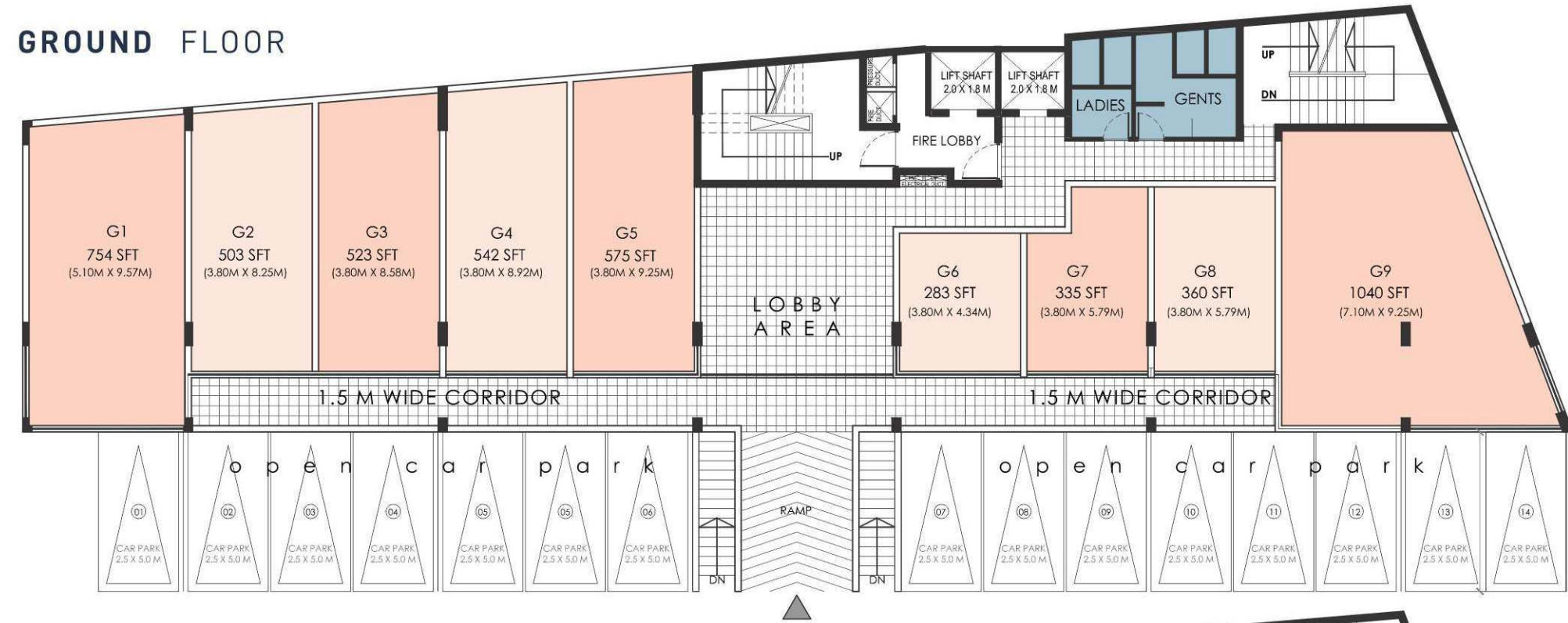


- ▾ Located on Airport Road, at Yeyyadi
- ▾ Ergonomically Designed Commercial spaces on lower Ground, Ground and Upper 4 floors
- ▾ 2 Automatic elevators
- ▾ On-Site Security and CC TV
- ▾ 2 level vehicle parking area
- ▾ Generator back up
- ▾ Separate toilet blocks for ladies and gents on each floors

DIFFERENCE IS MINDSPACE

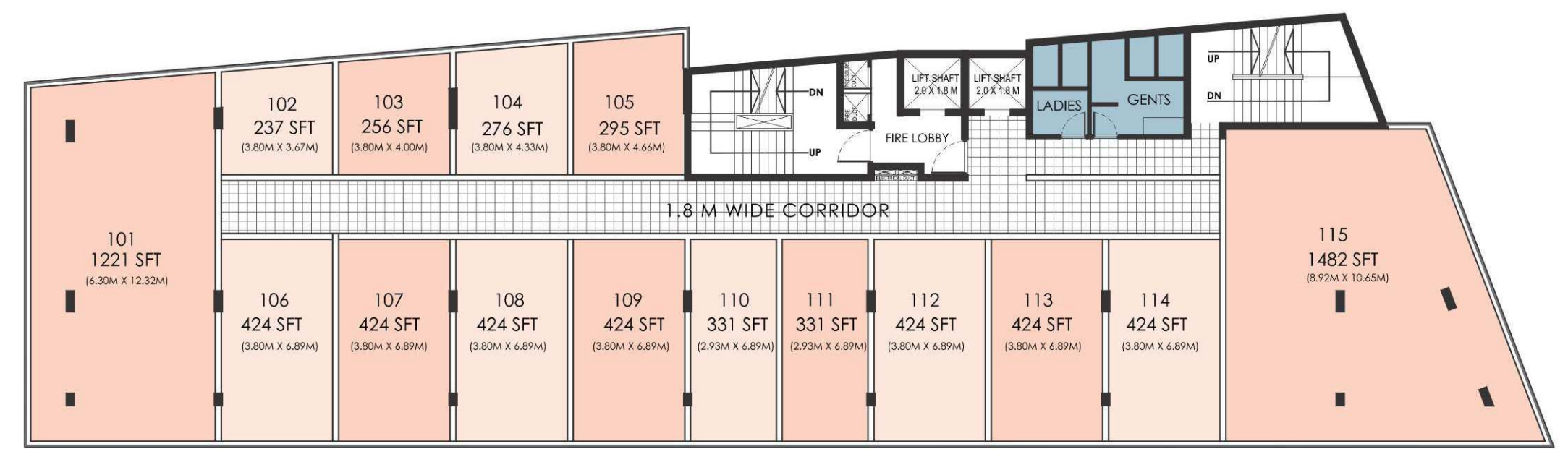


GROUND FLOOR



LOWER GROUND FLOOR

TYPICAL FIRST / SECOND / THIRD / FOURTH FLOOR

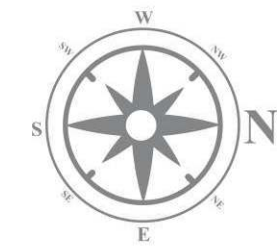


LOWER GROUND FLOOR AREA STATEMENT

SHOP NO.	BUILT UP AREA	SHOP NO.	BUILT UP AREA
G 1	754 SFT	G 6	283 SFT
G 2	503 SFT	G 7	335 SFT
G 3	523 SFT	G 8	360 SFT
G 4	542 SFT	G 9	1040 SFT
G 5	575 SFT		

GROUND FLOOR AREA STATEMENT

SHOP NO.	BUILT UP AREA	SHOP NO.	BUILT UP AREA
B 1	626 SFT	B 6	369 SFT
B 2	503 SFT	B 7	360 SFT
B 3	523 SFT	B 8	360 SFT
B 4	542 SFT	B 9	818 SFT
B 5	575 SFT		



1st/2nd/3rd/4th FLOOR

SHOP NO.	BUILT UP AREA
101	1221 SFT
102	237 SFT
103	256 SFT
104	276 SFT
105	295 SFT
106	424 SFT
107	424 SFT
108	424 SFT
109	424 SFT
110	331 SFT
111	331 SFT
112	424 SFT
113	424 SFT
114	424 SFT
115	1482 SFT

LOCATION



PROMOTERS :



#003, 'SAPHIRE', BEJAI CHURCH ROAD,
BEJAI, MANGALORE. PH: 0824 - 2223382

Contact: 9606 198 298

9945 271 784 \ 9845 345 384

projects@citadeldevelopers.com

www.citadeldevelopers.com

 /citadel developers  /citadeldevelopers



Prakash Beedi Compound, 1st Floor,
Near Passport Office, Kodialbail,
Mangaluru - 575 003
Ph : 0824 - 4110038

Contact: 99450 47175

98458 17798

www.paradiseproperties.co.in

salesparadiseproperties@gmail.com



Architects

**UPALEKAR
SADEKAR**

ARCHITECTS
INTERIOR
DESIGNERS

KRISHNA NIWAS, FIRST FLOOR, GOGTE WADI,
SENAPATI BAPAT MARG, MAHIM (W), MUMBAI - 400016
TEL NO. 24315608 / 24315579

Structural Consultants



#303 Sterling Chambers, Kodialbail,
Mangalore - 575003. Ph. 0824 - 2493692
E-mail. vimalanil@yahoo.com

A VENTURE OF
PARADISE CITADEL PROJECTS PVT. LTD.

RERA REGISTRATION NO. : PRM/KA/RERA/1257/334/PR/200811/003512

DISCLAIMER: THIS BROCHURE IS CONCEPTUAL AND IS NOT A LEGAL DOCUMENT. ALL MATERIALS, DIMENSIONS & DRAWINGS ARE APPROXIMATE INFORMATION SUBJECT TO CHANGE WITHOUT NOTICE. ACTUAL USABLE FLOOR SPACE MAY VARY FROM THE STATED FLOOR PLAN. DRAWINGS NOT TO SCALE. THE DEVELOPER RESERVES THE RIGHT TO MAKE REVISIONS.